

VALVE DATASHEET KNIFE GATE

5(6)

11.08.2020

Quotation	EST10-00006051	Prepared by	Ville Lindh
Quotation Pos.	30	Customer ref.	E-mail 12.7.2019, Adam
Customer	HYDRO Eugeniusz & Arkadiusz Dobrón		Gorzelnia

Application
Medium

VALVE TYPE	Knife gate valve
Type marking	SKH400MG20-40S0-NR

VALVE DATA	
Nominal diameter DN	400 mm
Flange drilling	DIN PN 25 - 4
Flange type	Flanged threaded
Face to face	286 mm
Max operating pressure	20 bar

Body material	Cast iron/welded steel - 0
Gate material	Duplex - S
Gland Packing	PTFE

Ring sleeve type marking	SKH400NR
Sleeve material (Seat)	NR
Pressure class (PN)	20
Max. operating temperature	75

ACTUATOR DATA

Actuator	MG = Handwheel operated, encapsulated stem with reduction gear
Stem Material	Mild steel S355 - 4
Supply pressure	
Supply voltage	

Guarding is available on Flowrox valves on request.

SURFACE TREATMENT

Painting	Red, RAL3002 EN 12944-5 A3.08/C3/M epoxy paint or powder coating
----------	--

AUXILIARIES

SPECIAL FEATURES, X

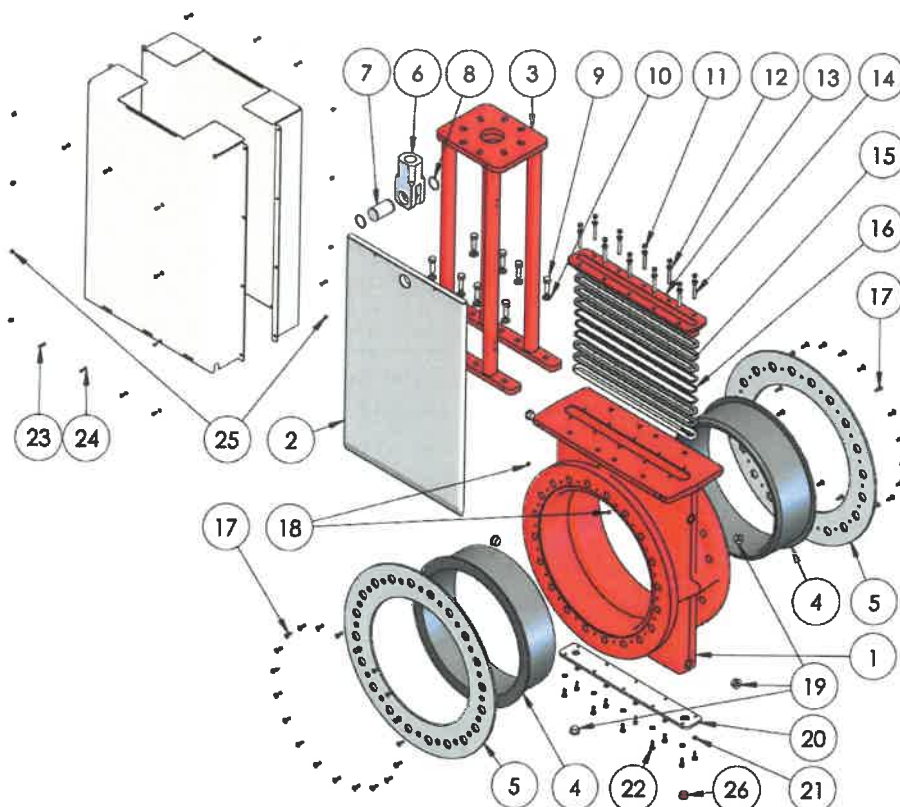
Additional text





SKH Slurry Knife Gate Valves, up to 20 bar, DN80-600

Part	Qty	Description	Part	Qty	Description
1	1	Valve body	11		Gland retainer nut
2	1	Gate	12		Gland retainer washer
3	1	Tower	13	1	Gland retainer
4	2	Ring sleeve (recommended spare part)	14		Gland retainer stud bolt
5	2	Ring sleeve retainer	15		Packing seal
6	1	Clevis	16		Grease spacer
7	1	Clevis pin	17		Socket head countersunk screw
8	2	Clevis pin retaining ring	18		Grease nipple
9		Tower mounting bolt	19		Flushing plug
10		Tower mounting washer			



TECHNICAL DATA

Valve Body

- Heavy duty single piece cast body
- Heavy duty tower
- Lubricated gland packing
- Flushing ports

Actuators

- Handwheel with gearbox
- Pneumatic
- Pneumatic with pneumatic spring
- Hydraulic
- Electric

Accessories

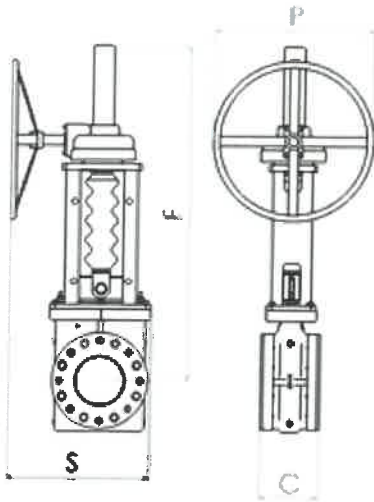
- Limit switches
- Solenoid valves
- Guarding
- Flushing

Pressure: up to 20 bar
 Sizes: DN80-600

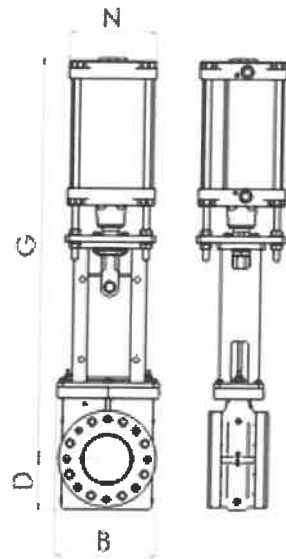


Main dimensions of SKH valves

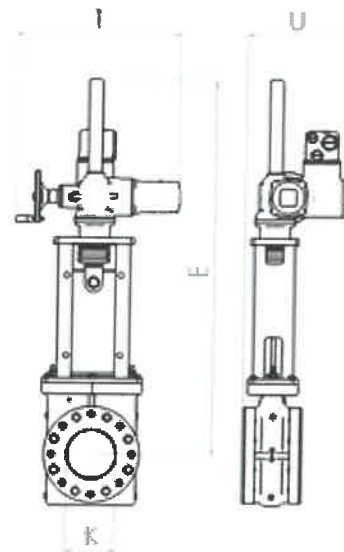
HANDWHEEL WITH GEARBOX (M)



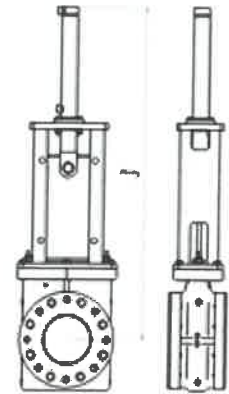
PNEUMATIC



ELECTRIC



HYDRAULIC



Valve size (DN)	B	C	D	E	F	G	J	K	N	P	S	T	U	Weight (kg)			
				E	MG	A	H		A	MG		E		E	MG	A	H
80	265	175	129	839	763	875	764	80	182	200	386	513	370	68	59	56	43
100	286	181	171	892	866	1002	867	100	244	200	397	513	381	80	72	77	59
125	330	184	198	986	1005	1190	1006	125	284	200	419	513	403	121	113	143	96
150	330	184	198	986	1005	1190	1006	150	284	200	419	513	403	121	106	136	113
200	380	184	219	1186	1196	1410	1206	200	347	400	494	536	438	144	130	201	113
250	430	226	248	1313	1330	1590	1364	250	450	400	520	724	500	224	187	263	171
300	480	242	298	1485	1485	1562	1517	300	610	400	613	731	526	304	276	386	227
350	610	251	338	1759	1745	-	1782	350	-	600	798	724	586	489	391	-	414
400	660	286	363	2040	2026	-	2079	400	-	500	823	724	611	610	513	-	552
450	710	311	388	2216	-	-	2278	450	-	-	-	795	685	760	-	-	802
500	760	373	413	2388	-	-	2400	500	-	-	-	795	707	870	-	-	885
600	860	373	478	2654	-	-	2588	600	-	-	-	919	841	1097	-	-	1120

Dimensions and weight are for guidance only - detailed drawings are available on request. All dimensions are in millimeters.



Flowrox Oy
P.O. Box 338
FI-53101 Lappeenranta, Finland
Tel. +358 201 113 311

www.flowrox.com
info@flowrox.com

